

Exhibit B



As Proposed



Potential Alternative

FRONT ELEVATION

NORTH FORTY

LOS GATOS, CA

**Lark District
Los Gatos Boulevard - Front Elevation**

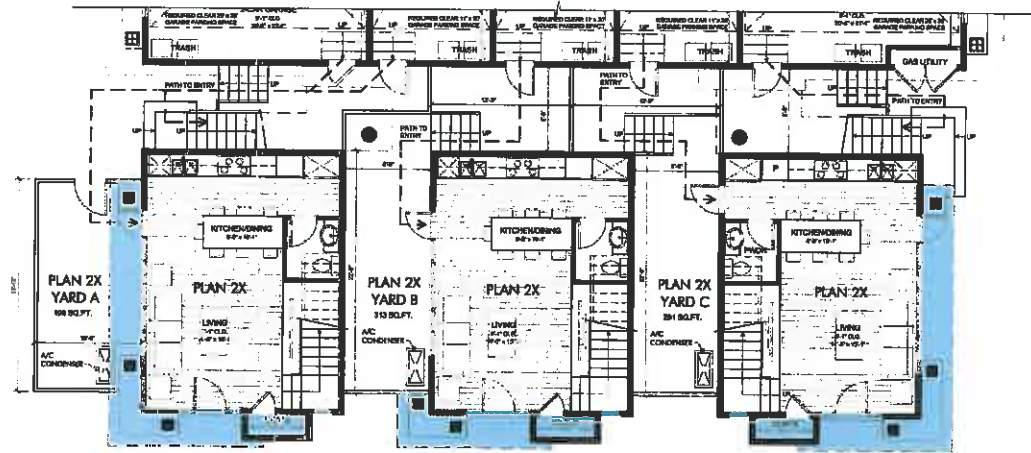


192-072

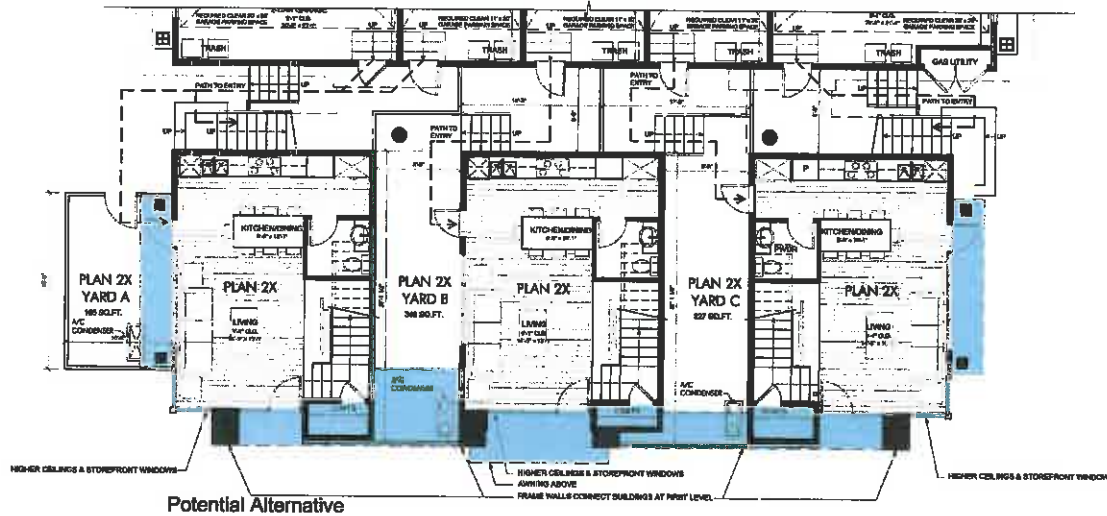
08.25.16



Scale: 3/16" = 1'-0"



As Proposed



Potential Alternative

NORTH FORTY

LOS GATOS, CA

Lark District
Elevation Enhancement for
Buildings 24 & 25 Along Los Gatos Blvd.



192-072

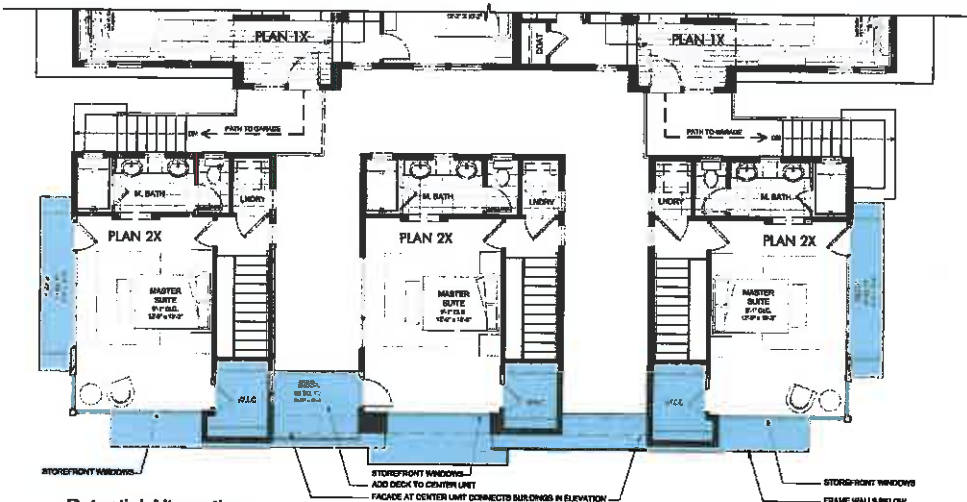
08.25.16



Scale: 3/16" = 1'-0"



As Proposed



Potential Alternative

NORTH FORTY

LOS GATOS, CA

Lark District
Elevation Enhancements for
Buildings 24 & 25 Along Los Gatos Blvd.



192-072

08.25.16



Scale: 3/16" = 1'-0"



NORTH FORTY

LOS GATOS, CA

Los Gatos Boulevard - Streetscape & Context Information

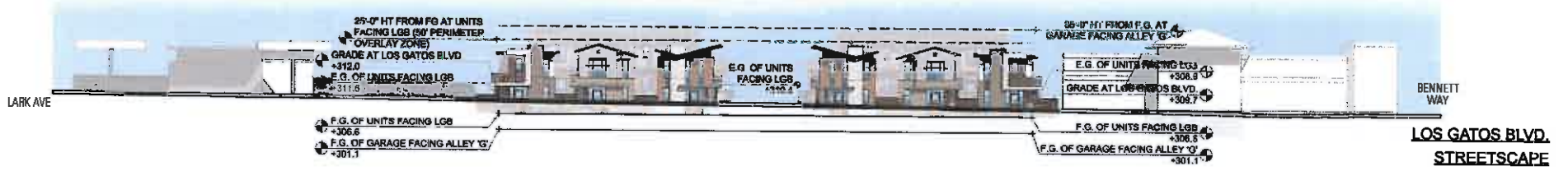


192-072

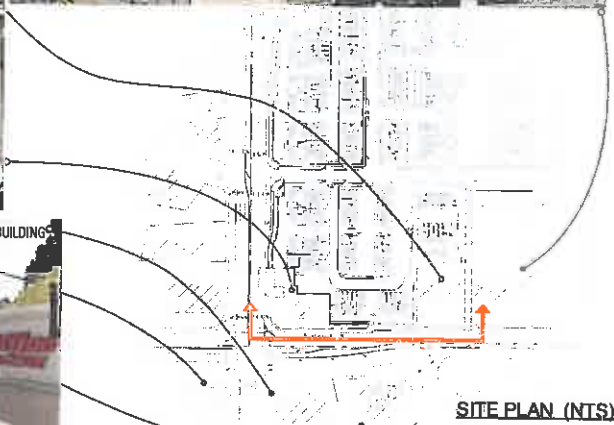
08.25.16

Scale: 1/16" = 1'-0"

5.LG.7



**LOS GATOS BLVD.
STREETScape**



SITE PLAN (NTS)

NORTH FORTY

LOS GATOS, CA

Los Gatos Boulevard - Streetscape & Context Information



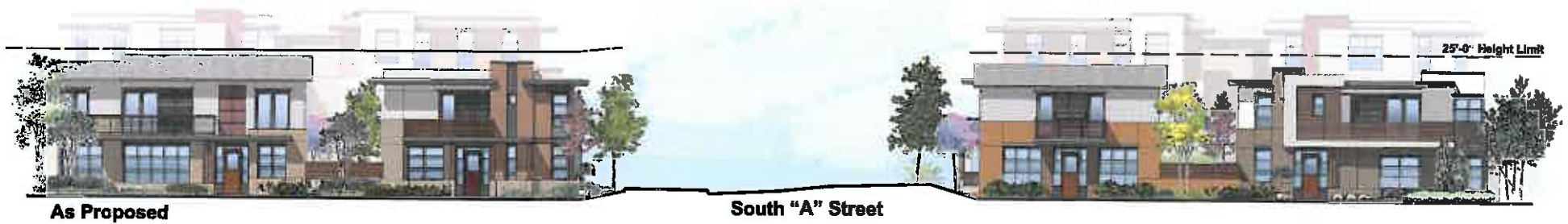
192-072

06.25.16

Scale: 1/16" = 1'-0"

5.LG.6

Exhibit C



As Proposed

South "A" Street



Potential Alternative

South "A" Street

Exhibit D



As Proposed



Potential Alternative

NORTH FORTY

LOS GATOS, CA

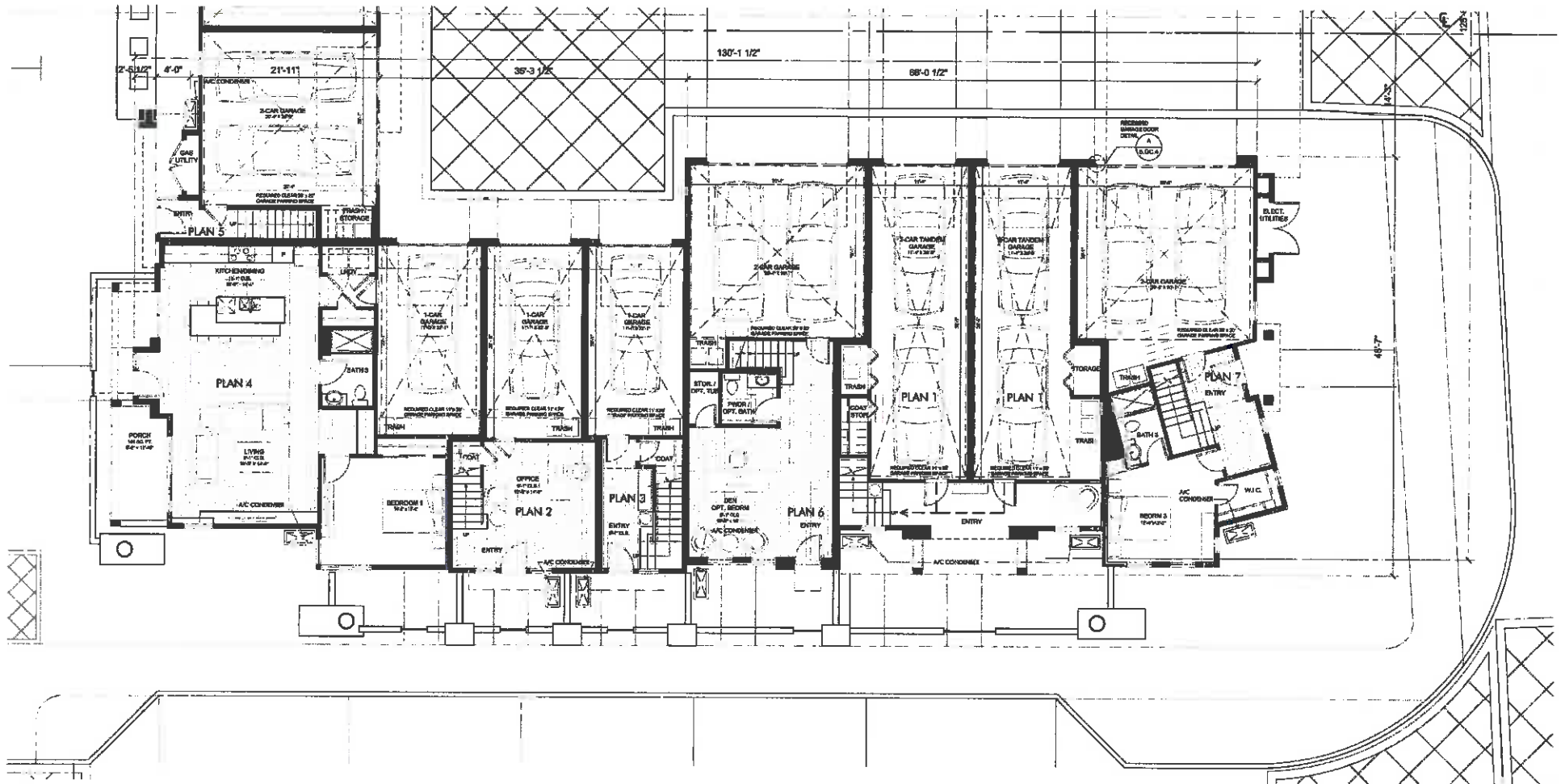
**Lark District
Conceptual Rowhome Traditional Elevation**



192-072

08.25.16

Exhibit E



** AVERAGE BEDROOM COUNT FOR CONDOMINIUM CLUSTER = 1.75
 ** AVERAGE BEDROOM COUNT FOR LARK DISTRICT & TRANSITION DISTRICT AREA D = 1.93
 ** REFER TO SETBACK DIAGRAMS ON SHEET 5.ST.12 & 5.ST.13

PLAN 5

1ST FLOOR:	84 sq.ft.
2ND FLOOR:	973 sq.ft.
3RD FLOOR:	942 sq.ft.
TOTAL:	1,999 sq.ft.
GARAGE:	454 sq.ft.

PLAN 4

1ST FLOOR:	1,014 sq.ft.
TOTAL:	1,014 sq.ft.
GARAGE:	283 sq.ft.

PLAN 2

1ST FLOOR:	268 sq.ft.
2ND FLOOR:	1,232 sq.ft.
TOTAL:	1,505 sq.ft.
GARAGE:	289 sq.ft.

PLAN 3

1ST FLOOR:	160 sq.ft.
2ND FLOOR:	210 sq.ft.
3RD FLOOR:	1,281 sq.ft.
TOTAL:	1,751 sq.ft.
GARAGE:	269 sq.ft.

PLAN 6

1ST FLOOR:	443 sq.ft.
2ND FLOOR:	752 sq.ft.
3RD FLOOR:	747 sq.ft.
TOTAL:	1,942 sq.ft.
GARAGE:	456 sq.ft.

PLAN 1

1ST FLOOR:	0 sq.ft.
3RD FLOOR:	996 sq.ft.
TOTAL:	996 sq.ft.
GARAGE:	497 sq.ft.

PLAN 1

1ST FLOOR:	0 sq.ft.
2ND FLOOR:	996 sq.ft.
TOTAL:	996 sq.ft.
GARAGE:	497 sq.ft.

PLAN 7

1ST FLOOR:	398 sq.ft.
2ND FLOOR:	1,010 sq.ft.
3RD FLOOR:	591 sq.ft.
TOTAL:	1,999 sq.ft.
GARAGE:	489 sq.ft.

SITE TOTAL UNIT COUNT

PLAN 1 :	20 UNITS
PLAN 2 :	10 UNITS
PLAN 3 :	10 UNITS
PLAN 4 :	10 UNITS
PLAN 5 :	10 UNITS
PLAN 6 :	10 UNITS
PLAN 7 :	10 UNITS

NORTH FORTY

LOS GATOS, CA

**Lark District & Transition District Area D
 Alt. Floor Plans Condominium Cluster - 1st Floor
 see Landscape Plans for more information**

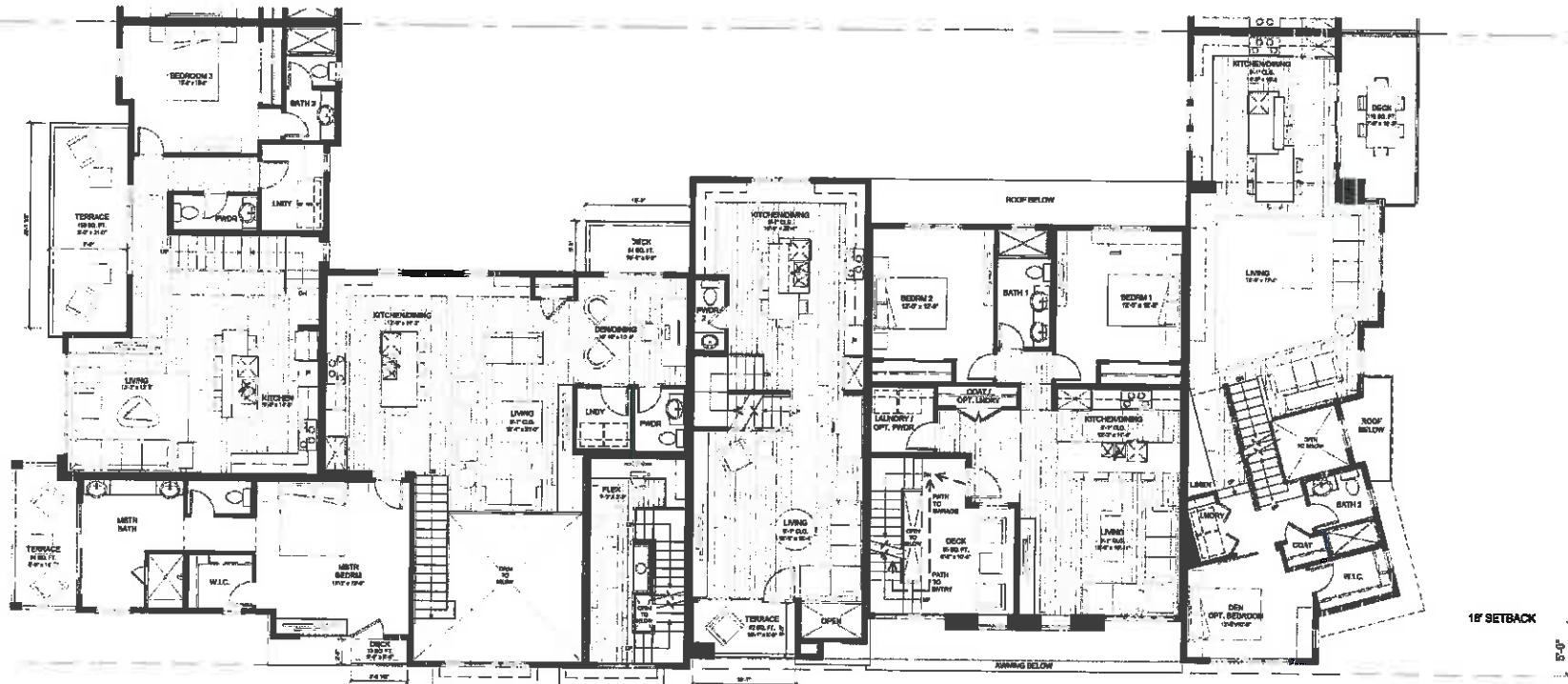


182-072

08.25.16



Scale: 3/16" = 1'-0"
5.CC.2



PLAN 5

PLAN 2

PLAN 3

PLAN 6

PLAN 1

PLAN 7

NORTH FORTY

LOS GATOS, CA

Lark District & Transition District Area D

Alt. Floor Plans Condominium Cluster - 2nd Floor



192-072

08.25.16



Scale: 3/16" = 1'-0"

5.CC.3

Exhibit F



DESIGN AS SUBMITTED



POTENTIAL REVISIONS



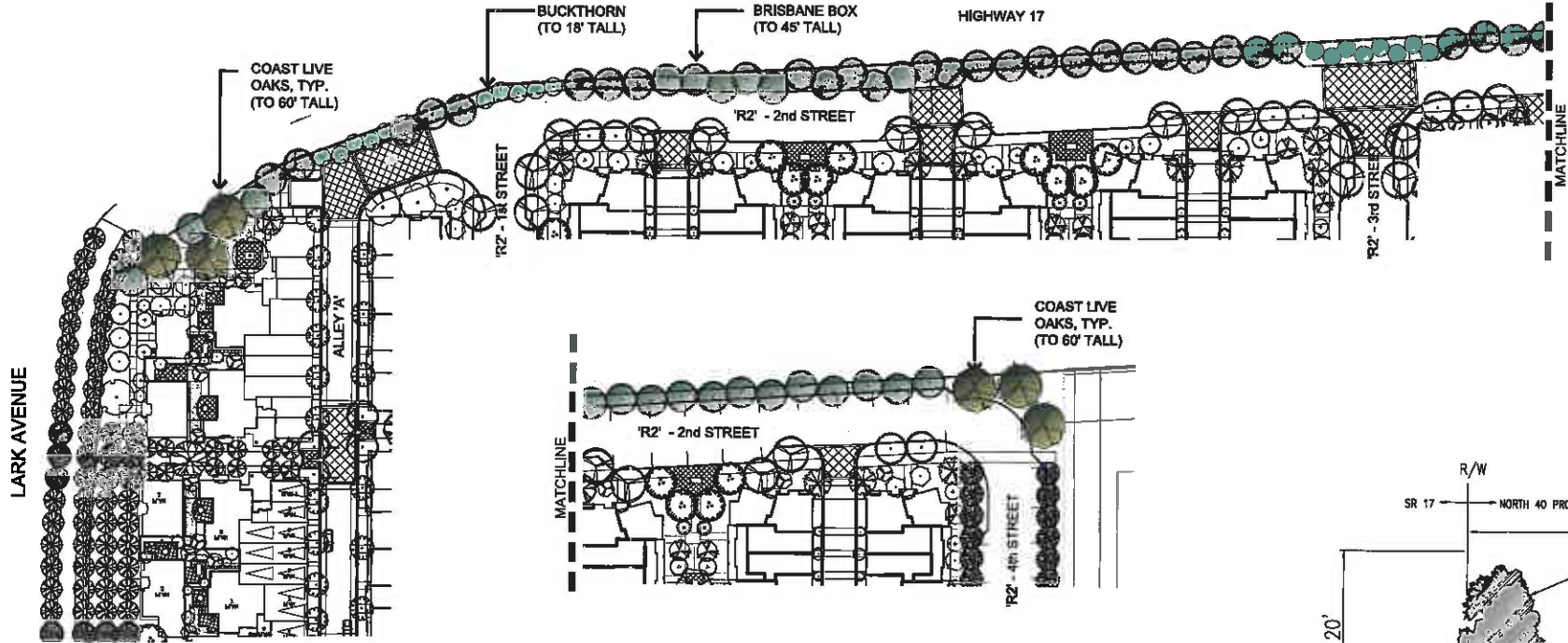
DESIGN AS SUBMITTED



POTENTIAL REVISIONS

Exhibit G

© 2016 Van Dorn Abed Landscape Architects, Inc.




PLAN VIEW

 **BRISBANE BOX (LOPHOSTEMON CONFERTUS)**
EVERGREEN TREE, 40' TO 45' TALL x 22' WIDE



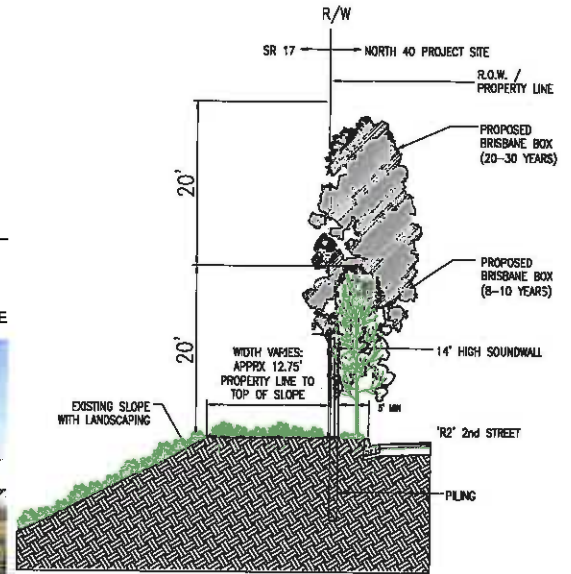
 **BUCKTHORN (RHAMNUS ALATERNUS)**
EVERGREEN TREE, 15'-18" TALL x 10" WIDE



 **COAST LIVE OAK (QUERCUS AGRIFOLIA)**
EVERGREEN TREE, 20'- 60' TALL x 20' - 45' WIDE



EVERGREEN TREES AT SOUNDWALL/HIGHWAY



SECTION AT SOUNDWALL

NORTH FORTY

LOS GATOS, CA

**Lark District
Evergreen Trees at Soundwall**



V1301

08.16.16

