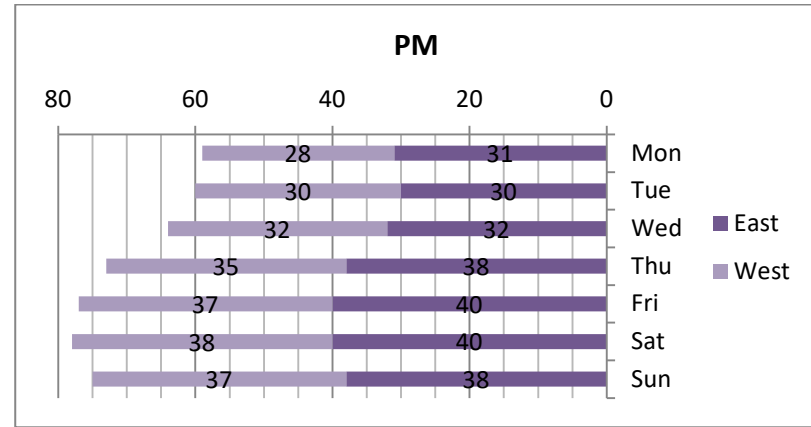
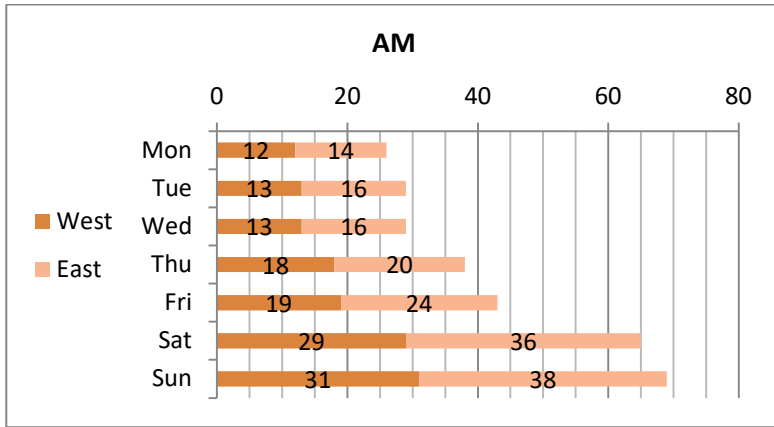


EXHIBIT C

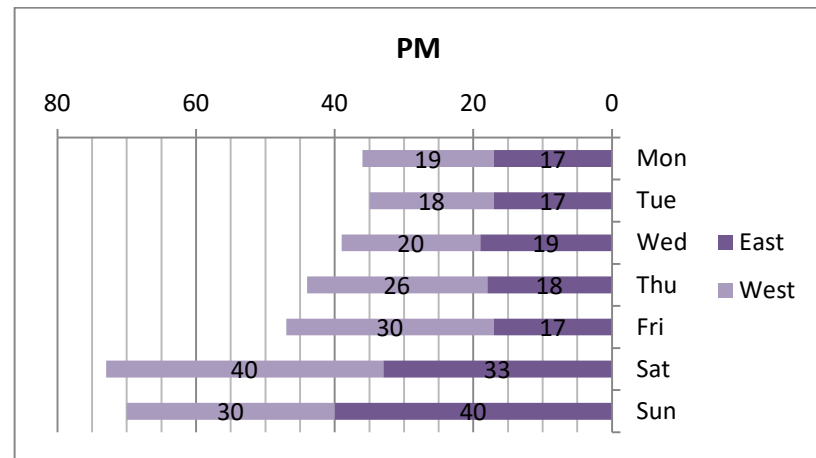
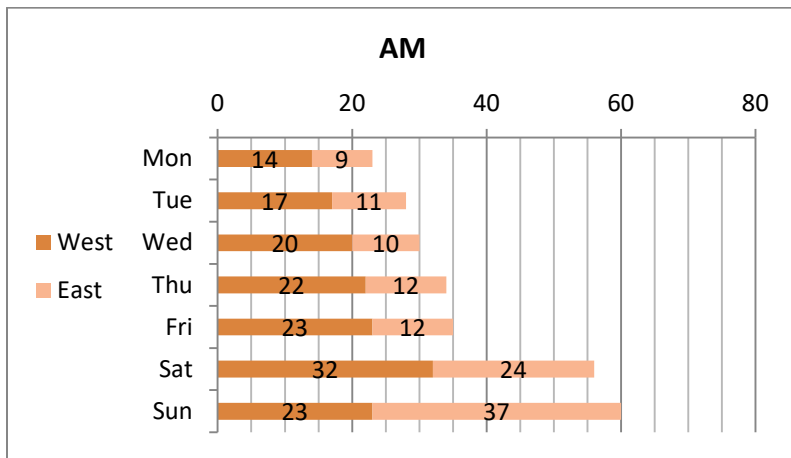
Park Avenue Parking Occupancy Report- 9th Street to 12th Street

As Staff assess design alternatives for Park Avenue this fall, careful consideration has been given to the way parking is utilized on the street. This occupancy report provides information for Park Ave between 9th and 12th Streets - the area that would likely see the most displacement with future corridor changes; the rest of the project area feels parking impacts primarily only during the busiest ski/peak days. There are 78 parking stalls between 9th and 12th Streets – 40 on the east side and 38 on the west side.

PRE-COVID PARKING OCCUPANCY RATES:



POST-COVID PARKING OCCUPANCY RATES:



* It should be noted that the suspension of paid parking since March 2020 has reduced Old Town employee parking usage of this corridor and much of the free parking lots, including Main Street, are seeing increased use by employees/business owners.