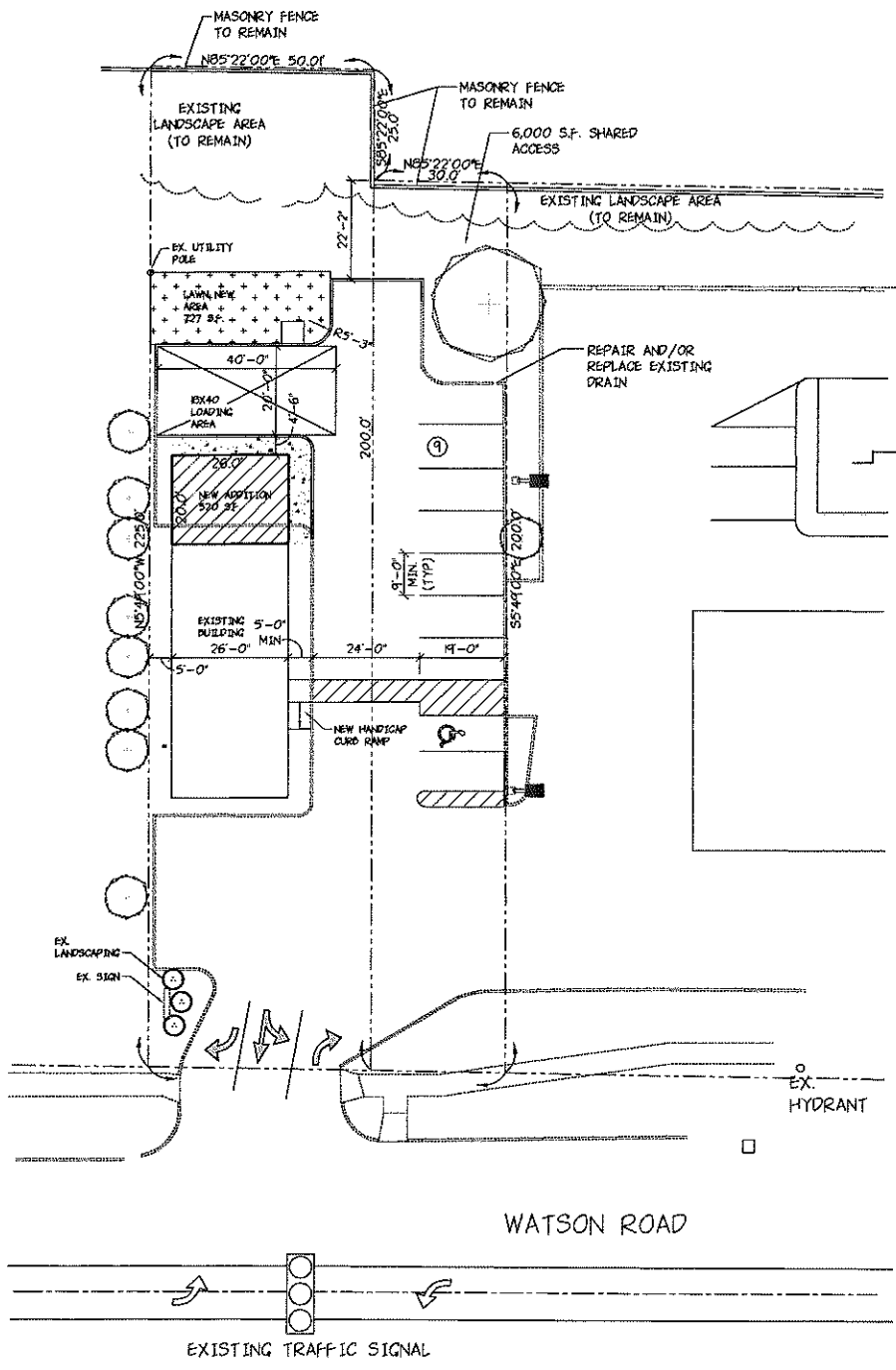


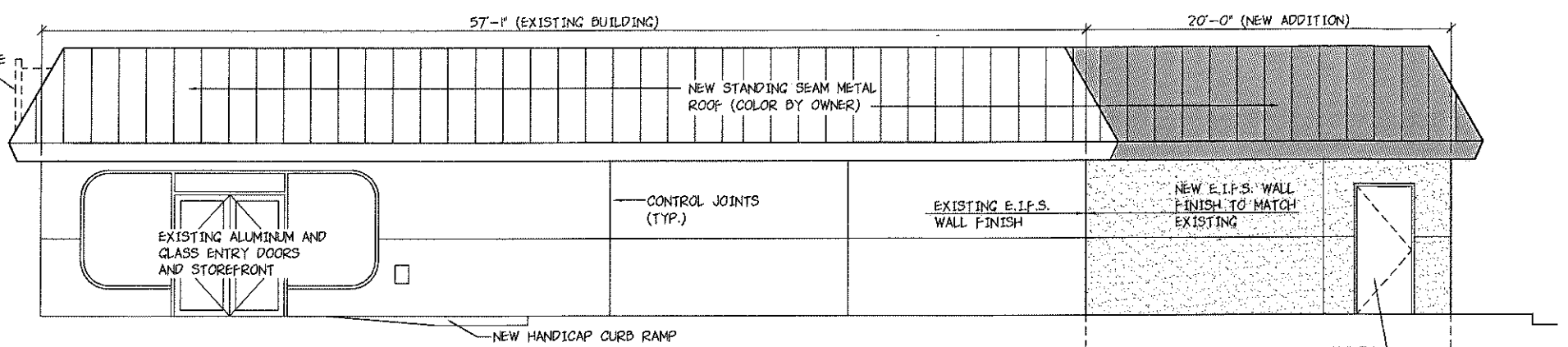
PARKING CALCULATION:
 3.5/1,000 SF. MIN.
 4.5/1,000 SF. MAX.
 2,002 SF. ÷ 1,000 X 4.5 = 9 CARS MAX.
 ZONING DISTRICT C-1

TOTAL SITE AREA = 11,250 SF.
 TOTAL BUILDING AREA = 2,002 SF.
 PAVED AREA = 9,160 SF.
 LANDSCAPE AREA = 3,803 SF.

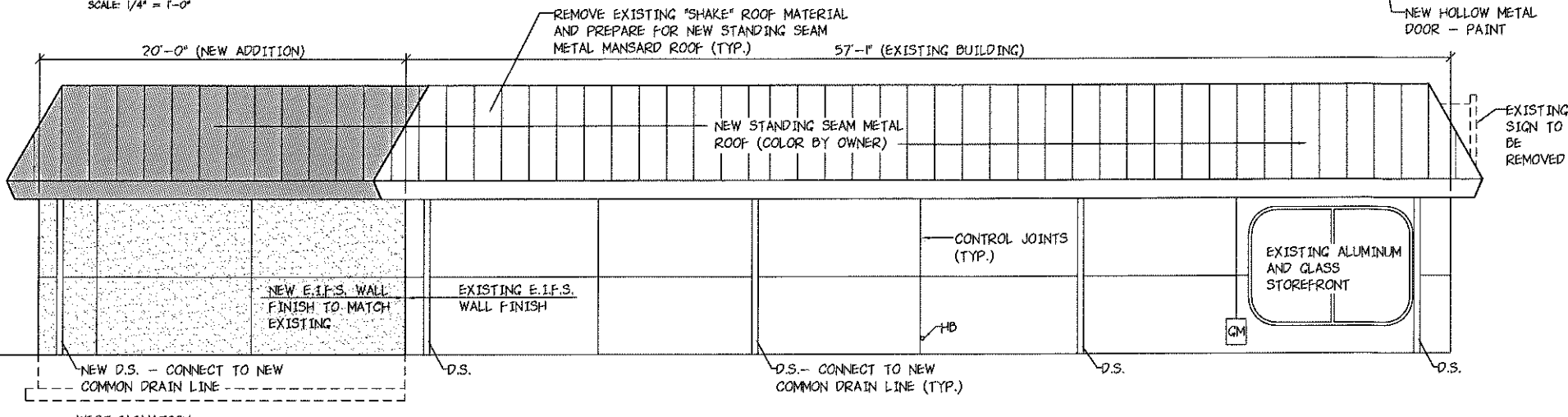
NOTE:
 1) NO MODIFICATIONS TO SITE LIGHTING
 2) A NEW WALL SIGN WILL BE INSTALLED TO BE COMPLIANT W/ CURRENT ORDINANCE.



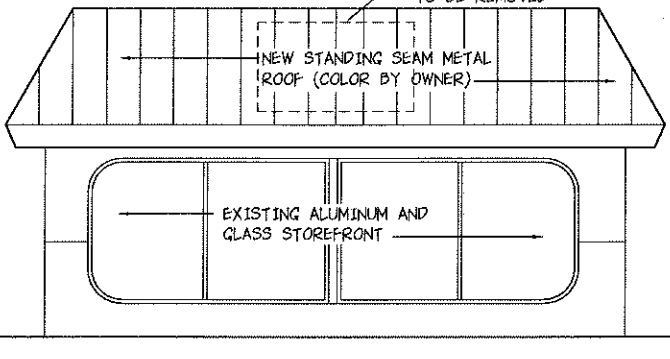
SITE PLAN
 SCALE: 1" = 20'-0"



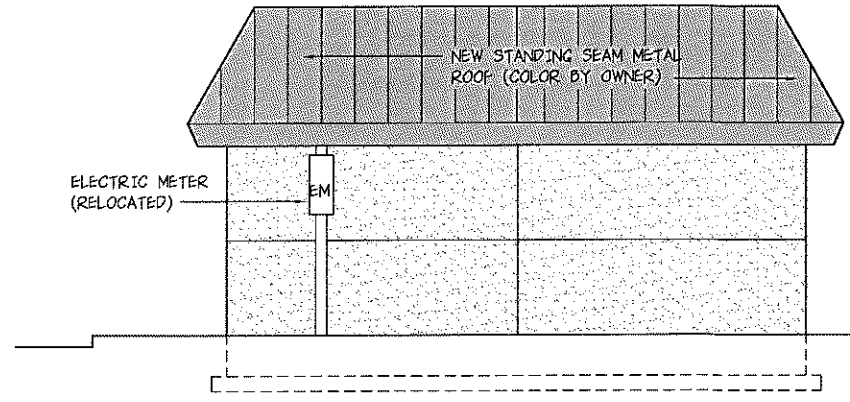
EAST ELEVATION
 SCALE: 1/4" = 1'-0"



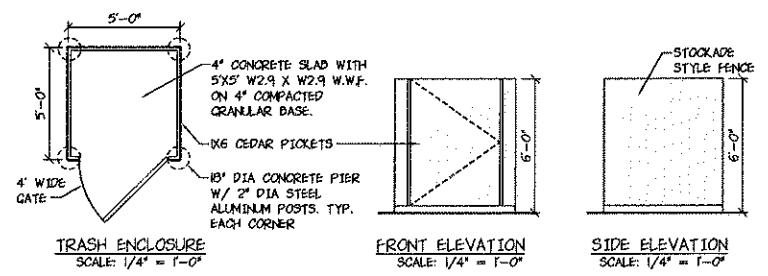
WEST ELEVATION
 SCALE: 1/4" = 1'-0"



SOUTH ELEVATION
 SCALE: 1/4" = 1'-0"



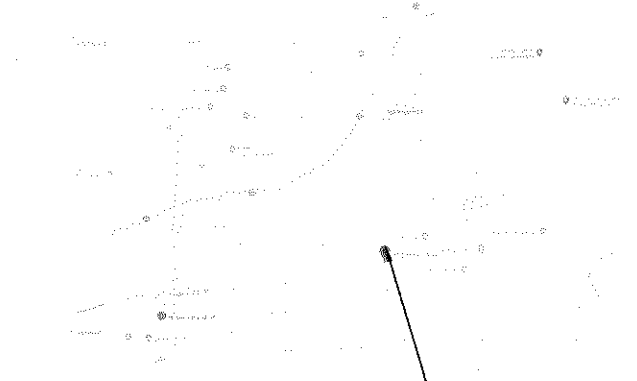
NORTH ELEVATION
 SCALE: 1/4" = 1'-0"



TRASH ENCLOSURE
 SCALE: 1/4" = 1'-0"

FRONT ELEVATION
 SCALE: 1/4" = 1'-0"

SIDE ELEVATION
 SCALE: 1/4" = 1'-0"



LOCATION PLAN
 SCALE: N.T.S.

REMODELED FOR
BUILDING ADDITION
 9833 WATSON ROAD
 CRESTWOOD, MISSOURI
 ARCHITECTURAL CORPORATION 1001 GARDEN BLVD. ST. LOUIS, MO 63107

NOVA
 NOVA GROUP INC.
 ARCHITECTS AND ENGINEERS
 6312 HAZELHURST COURT SUITE 102
 HAZELWOOD, MISSOURI 63042 (314) 731-5353

project no. 219028A
 drawn by CKP/ASM
 date 06/19/19
 revision 06/25/19
 08/01/19

SITE PLAN &
 EXTERIOR
 ELEVATIONS

A-0
 sheet 1 of 1