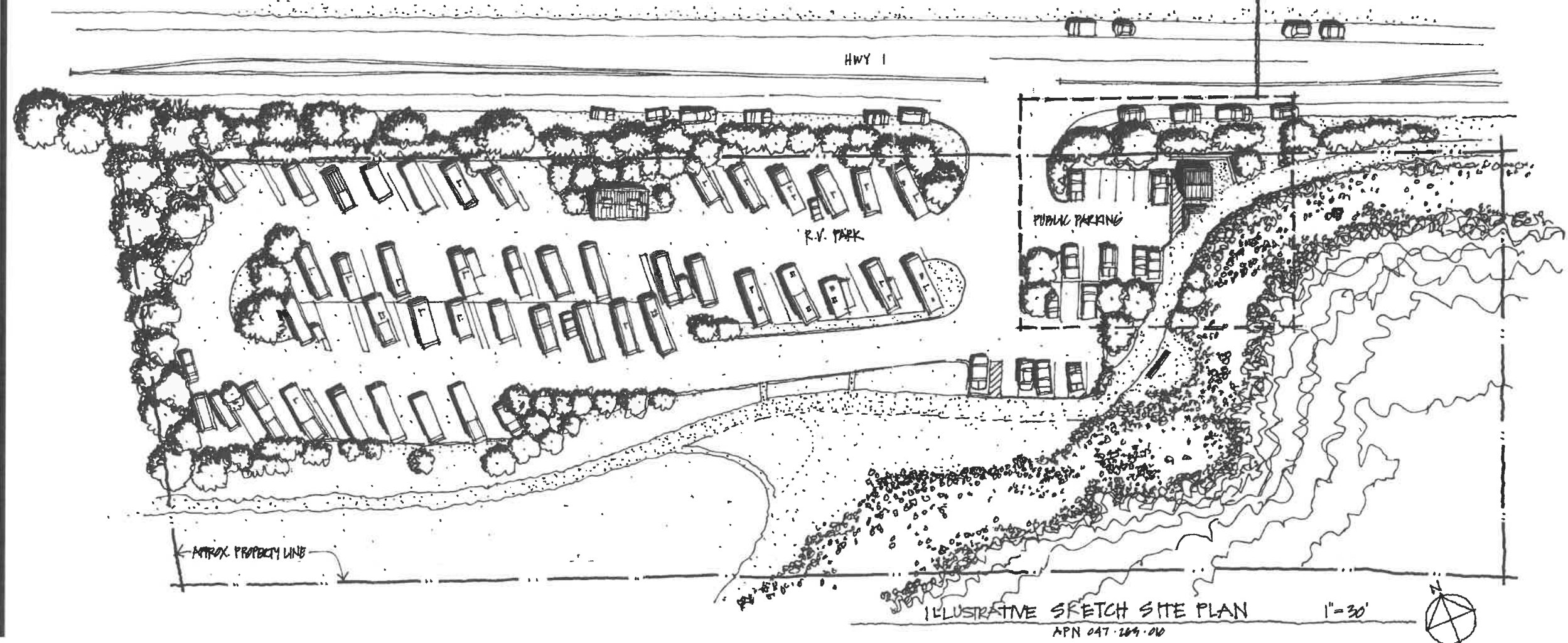
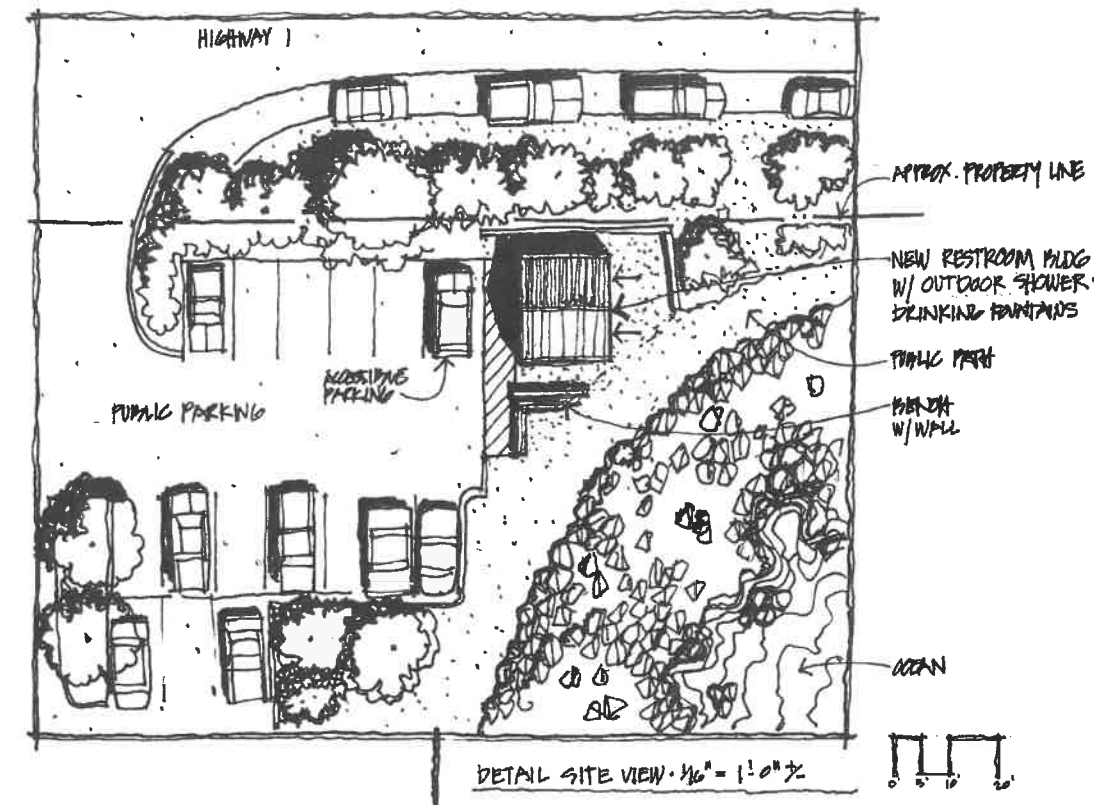


RECEIVED
JAN 29 2018
CITY OF HALF MOON BAY
COMMUNITY DEVELOPMENT DEPT.



JOHN MATTHEWS ARCHITECTS

335-A EAST FOURTH AVENUE
SAN MATEO, CA 94401
TELE: (650) 340-1107
FAX: (650) 340-1677

NEW PUBLIC RESTROOM LOCATED AT
PILLAR POINT FOR THE SAN MATEO
COUNTY HARBOR DISTRICT
CABRILLO HIGHWAY - HIGHWAY 1
HALF MOON BAY, CA 94019

ILLUSTRATIVE SKETCH
SITE PLAN

DATE
JANUARY 18, 2018

Revision Schedule
Number Date Description

SCALE
12" = 1'-0"

DRAWN

JOB NO.
17640

SHEET

A-1.1

OF SHEETS

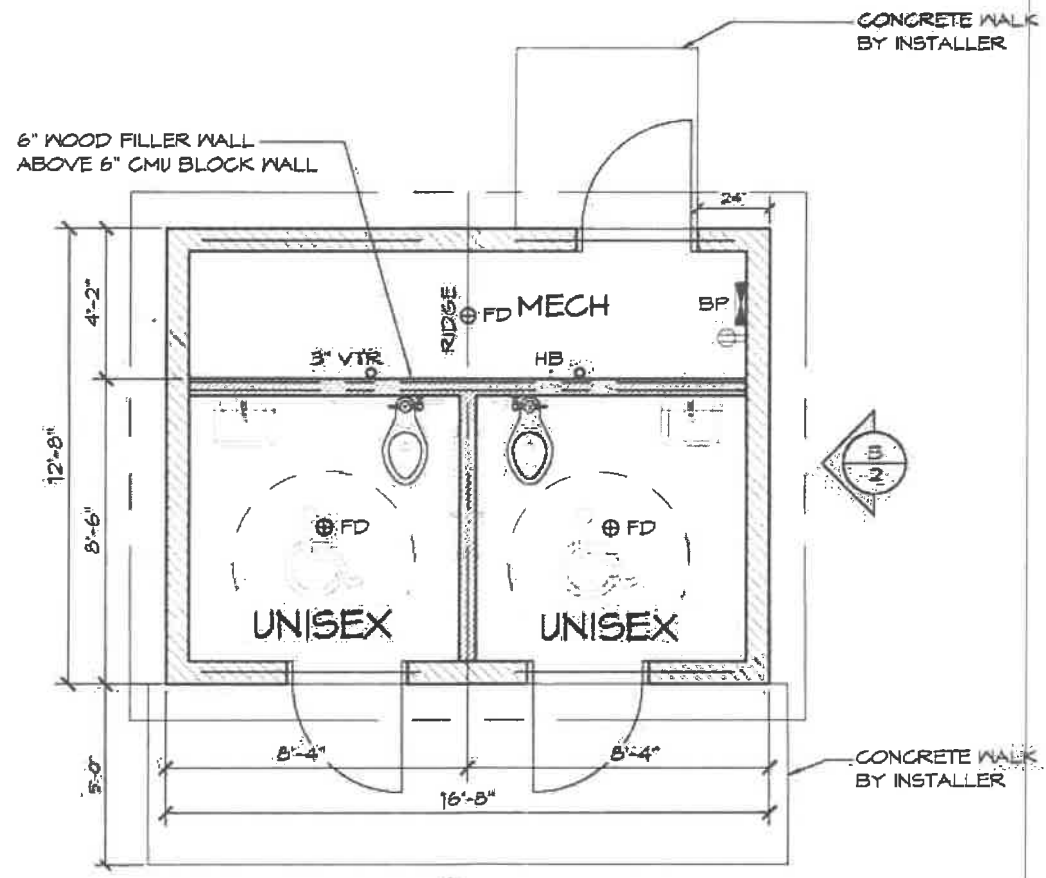
1/18/2018 3:31:55 PM

I:\Server\DUJOB FILES\Commercial\17640-RV Park\02-Site\RV Park-Site-Rev2-Jan2018.rvt

LEGEND		
SYMBOL	DESCRIPTION	AREA/ QUANTITY
	GABLE VENT	4
	2x6 WOOD FILLER WALL	2
	EXTERIOR WALL LIGHTS	3
	INTERIOR WALL LIGHTS	2
	INTERIOR CEILING LIGHTS	1
	ELECTRICAL OUTLET	1
	FLOOR DRAIN	3
	WALL FAUCET	1

WALL TYPE SCHEDULE

- 8" REINFORCED CONCRETE MASONRY BLOCK WALL WITH MORTAR JOINTS, GROUTED SOLID ALL CELLS RUNNING BOND PATTERN.
- 6" REINFORCED CONCRETE MASONRY BLOCK WALL WITH MORTAR JOINTS, GROUTED SOLID ALL CELLS RUNNING BOND PATTERN.



1 FLOOR PLAN
SCALE: 1/4" = 1'-0"

THESE PLAN VIEW AND ELEVATION DRAWINGS ARE A PRELIMINARY ARCHITECTURAL REPRESENTATION OF THE BUILDING. ALL DIMENSIONS, FEATURES AND COMPONENTS SHOWN ON THESE PRELIMINARY DRAWINGS MAY OR MAY NOT BE PART OF THE QUOTE. PLEASE REFER TO THE "SCOPE OF SUPPLY AND SERVICES" LETTER PROVIDED WITH YOUR QUOTE FOR ROMTEC'S PROPOSED SCOPE OF SUPPLY.

ROMTEC
18240 NORTH BANK ROAD - ROSEBURG, OR 97470
(503) 486-2041 FAX (503) 486-2042

PRELIMINARY

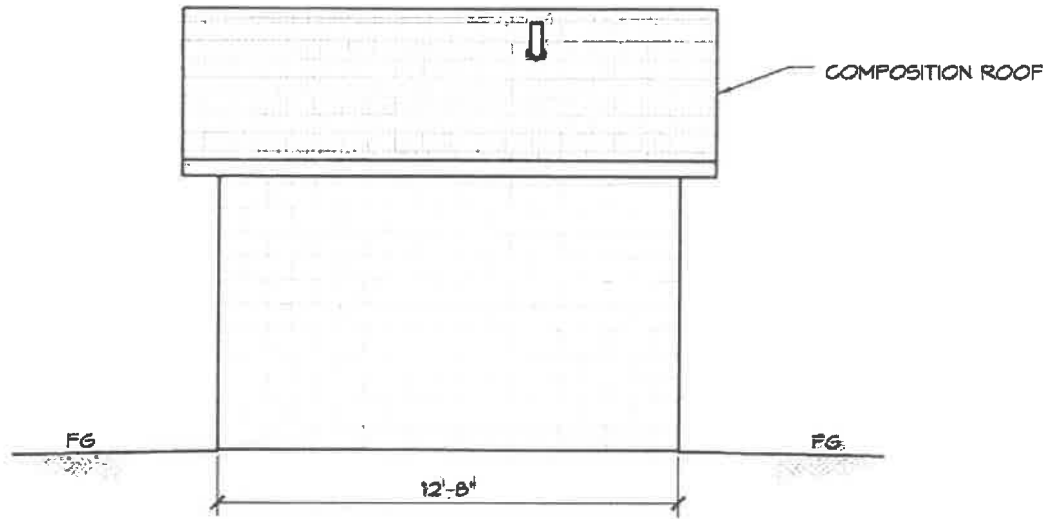
© 2015 ROMTEC, INC. ALL RIGHTS RESERVED. THESE PLANS AND DRAWINGS MAY NOT BE REPRODUCED, ADAPTED OR FURTHER DISTRIBUTED, AND NO BUILDINGS MAY BE CONSTRUCTED FROM THESE PLANS, WITHOUT THE WRITTEN PERMISSION OF ROMTEC, INC.

PROJECT: 2022-0001
MODEL: XXXX
DATE: 00/00/15
REVISIONS

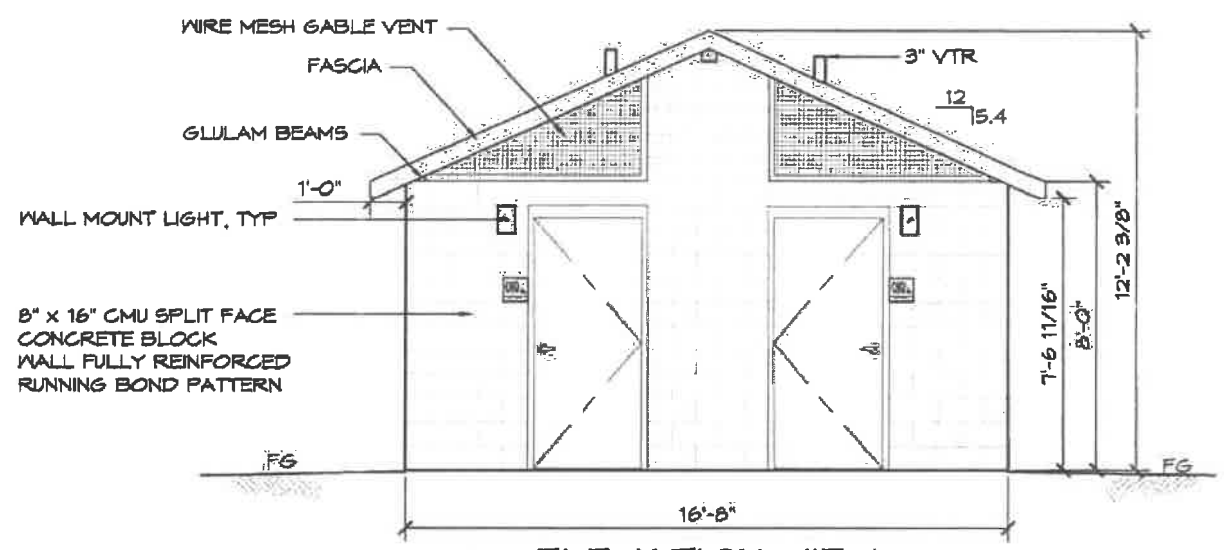
CUSTOMER PROJECT LOCATION
SHEET TITLE: FLOOR PLAN

SHEET NO. 1

CITY OF HALF MOON BAY
COMMUNITY DEVELOPMENT DEPT.
JAN 29 2018
RECEIVED



B ELEVATION VIEW
SCALE: 1/4" = 1'-0"



C ELEVATION VIEW
SCALE: 1/4" = 1'-0"

THESE PLAN VIEW AND ELEVATION DRAWINGS ARE A PRELIMINARY ARCHITECTURAL REPRESENTATION OF THE BUILDING. ALL DIMENSIONS, FEATURES AND COMPONENTS SHOWN ON THESE PRELIMINARY DRAWINGS MAY OR MAY NOT BE PART OF THE QUOTE. PLEASE REFER TO THE "SCOPE OF SUPPLY AND SERVICES" LETTER PROVIDED WITH YOUR QUOTE FOR ROMTEC'S PROPOSED SCOPE OF SUPPLY.

ROMTEC
18240 NORTH BANK ROAD - ROSEBURG, OR 97470
(503) 688-6841 FAX (503) 688-0881

PRELIMINARY

CUSTOMER PROJECT LOCATION

PROJECT: XXXX
MODEL: 2022
DATE: 00/00/15
REVISIONS:

PROJECT TITLE: ELEVATIONS (CMU)

TH

SHEET NO. 2

CITY OF HALF MOON BAY
COMMUNITY DEVELOPMENT DEPT.
JAN 29 2018
RECEIVED