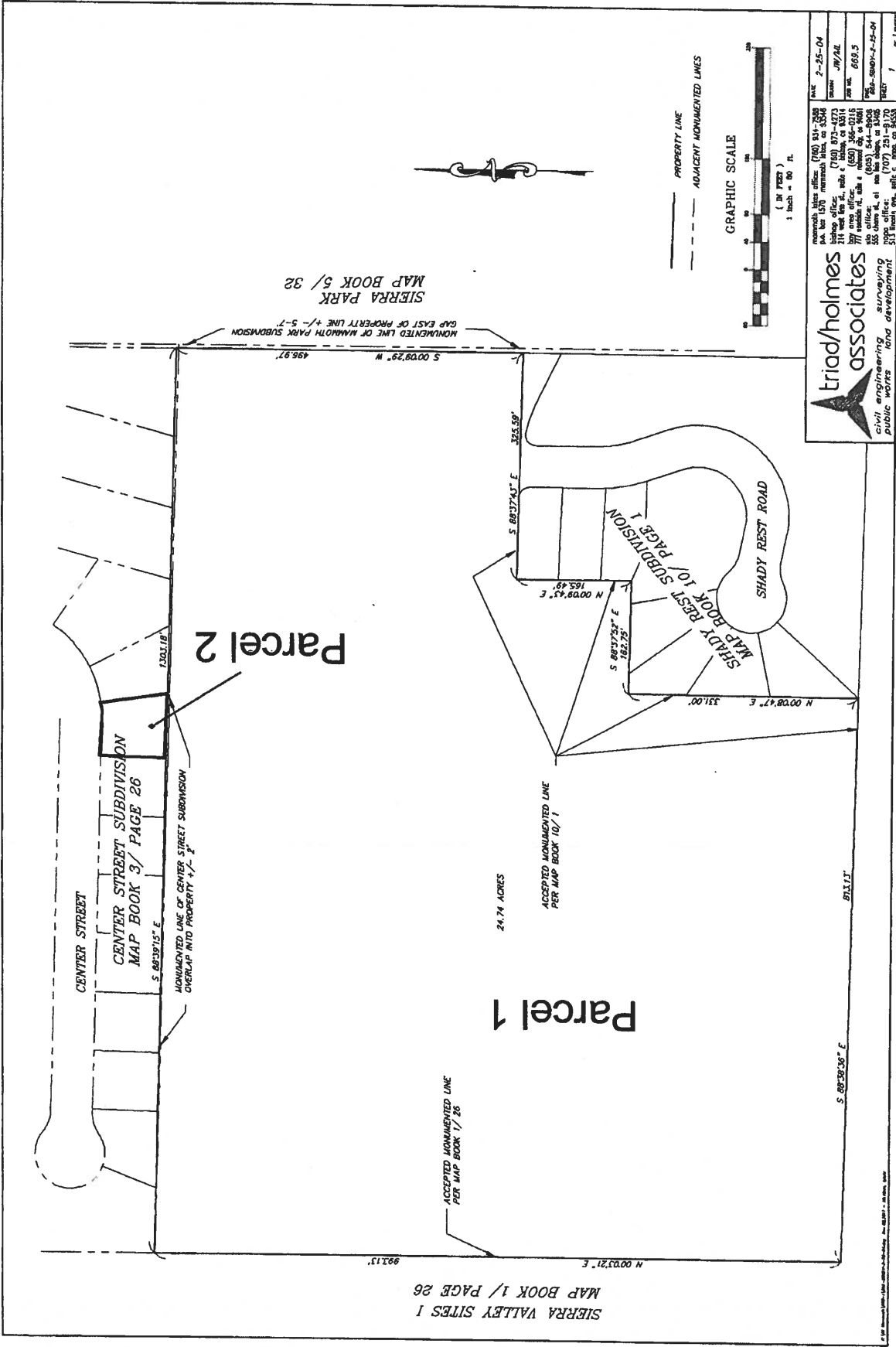


# Exhibit B



**triad/holmes associates**  
 civil engineering and development  
 surveying  
 public works

memphis sites office: (901) 531-2500  
 144 N. 10th Memphis, TN 38102  
 217 West Main St., Suite 100  
 Memphis, TN 38102  
 2000 sites office: (501) 365-0116  
 144 N. 10th Memphis, TN 38102  
 2000 sites office: (901) 251-9170  
 333 South Main St., Suite 100  
 Memphis, TN 38102

DATE: 2-25-04  
 DRAWN: JH/JAL  
 JOB NO.: 688.5  
 SHEET: 1 OF 1